

Rosewood Towns

BY SUMMERHILL HOMES



Elevation of twelve-home building

Rendering is artist's conception.

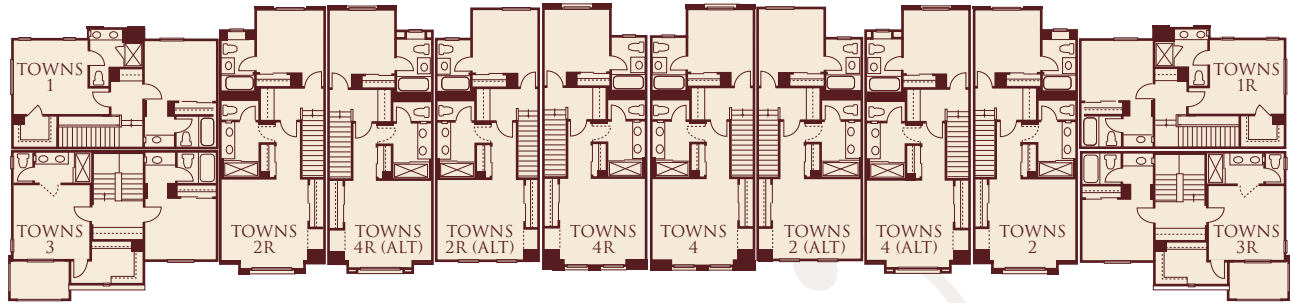
SummerHill Homes reserves the right to alter floorplans, specifications, features, prices, and other information described in this brochure without notice or obligation. All room dimensions and home sizes are approximate and may vary depending upon elevation. Window sizes and locations, room sizes, floorplans, and patio/deck layouts are subject to change per plan location. Ask your Community Sales Team for details. All information contained in this brochure is qualified in its entirety by the Seller's Information Statement, which is incorporated herein by the reference. 1/09



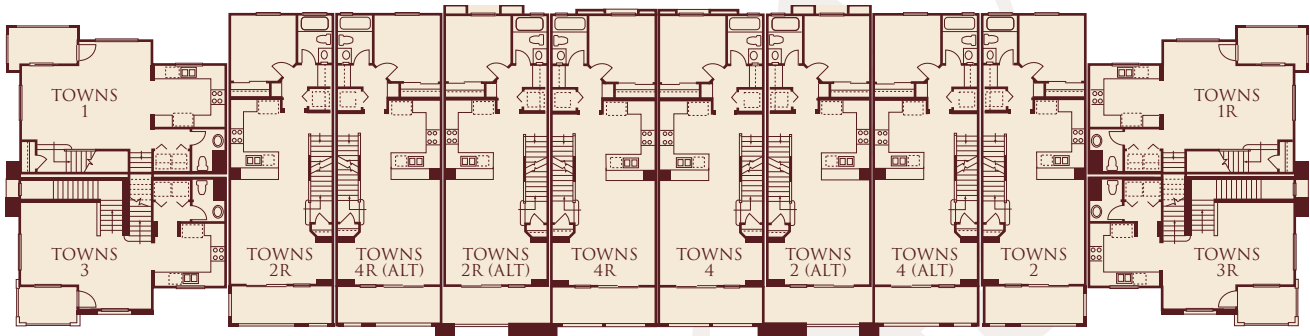
Building Layout

Rosewood Towns

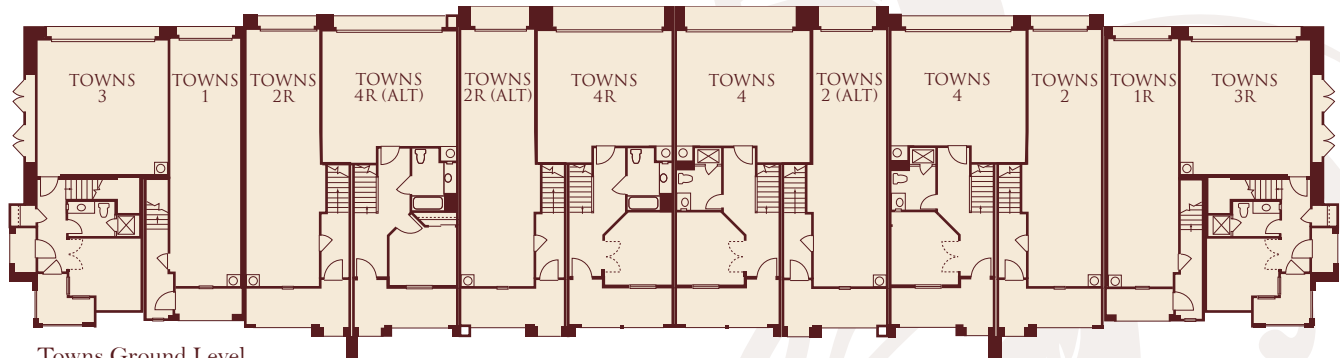
BY SUMMERHILL HOMES



Towns Second Level



Towns First Level



Towns Ground Level

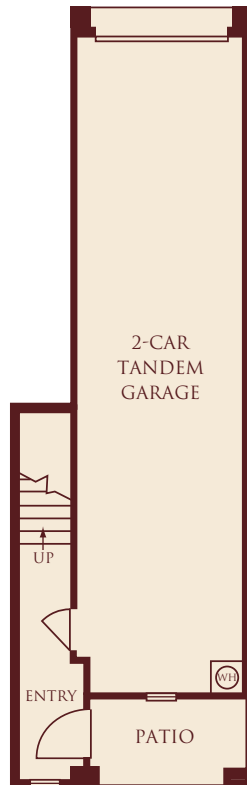


Towns One *Preliminary*

2 Bedrooms • 2½ Baths • 2-Car Tandem Garage • Approximately 1,176 Square Feet

Rosewood Towns

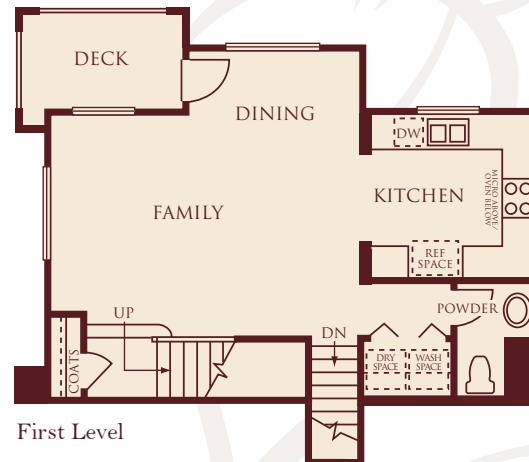
BY SUMMERHILL HOMES



Ground Level



Second Level



First Level



Towns Two Preliminary

3 Bedrooms • 3 Baths • 2-Car Tandem Garage • Approximately 1,306 Square Feet

Rosewood Towns

BY SUMMERHILL HOMES



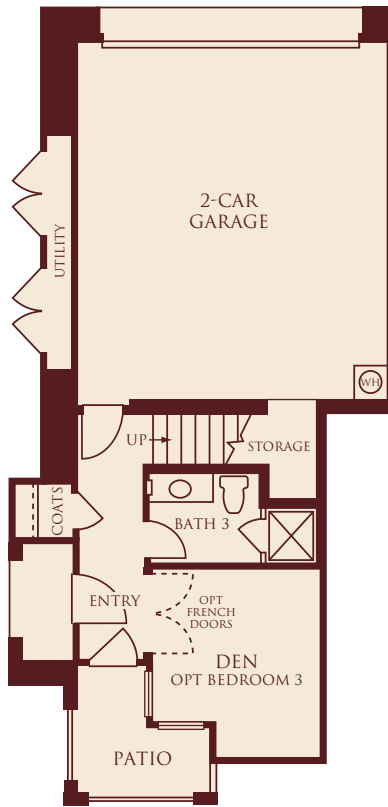
SummerHill Homes reserves the right to alter floorplans, specifications, features, prices, and other information described in this brochure without notice or obligation. All room dimensions and home sizes are approximate and may vary depending upon elevations. Window sizes and locations, room sizes, floorplans, and patio/deck layouts are subject to change per plan location. Ask your Community Sales Team for details. All information contained in this brochure is qualified in its entirety by the Seller's Information Statement, which is incorporated herein by the reference. 1/09

Towns Three Preliminary

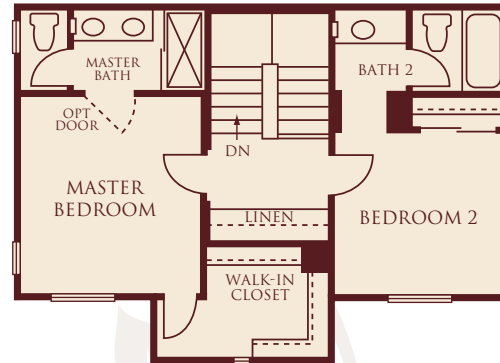
3 Bedrooms • 3½ Baths • Den • 2-Car Garage • Approximately 1,397 Square Feet

Rosewood Towns

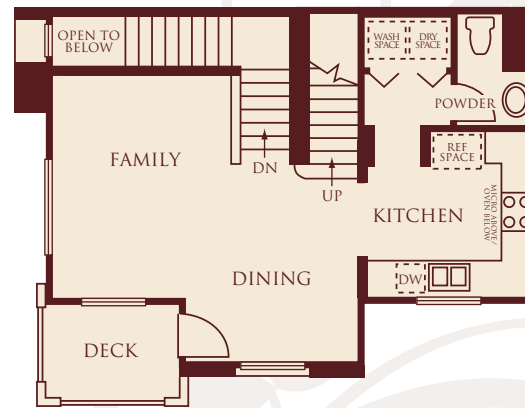
BY SUMMERHILL HOMES



Ground Level



Second Level



First Level



Optional Bedroom 3
at Den



Towns Four *Preliminary*

3 Bedrooms • 4 Baths • Den • 2-Car Garage • Approximately 1,572 to 1,576 Sq. Ft.

Rosewood Towns

BY SUMMERHILL HOMES



Distinctively Different Exteriors

Beautiful and durable three-coat stucco and Hardiplank® lap siding exteriors with brick, wood, and iron detailing

Handsome low maintenance, fire-resistant concrete tile roof, per elevation

Stunning eight-foot Therma-Tru® fiberglass entry door with Venetian handle for an elegant first impression

Two-car or two-car tandem garage with architectural style roll-up sectional door, automatic garage door opener, and two remotes

Beautifully landscaped common areas for a welcoming feel every time you come home

Inviting front porch and spacious deck, per residence

Inspiring Interiors

Hand-set 12"-square ceramic tile flooring in entry for easy upkeep

Designer-selected, stain-resistant carpet for impressive style and durability

Classically-designed stairs with painted handrail, newels and balusters

Designer-selected lighting package with Decora® light switches to complement your home

Raised two-panel interior doors with polished chrome door knobs

Gourmet Kitchens

Maple recessed panel cabinetry in rich caramel finish offers adjustable upper shelves, white interior finish, concealed hinges, and easy-glide drawers

Designer-selected 6"-square ceramic tile countertop with full backsplash behind cooktop

Kohler® Executive Chef™ dual compartment kitchen sink with Kohler® gourmet polished chrome pull-out spray faucet

Beautiful GE® stainless steel with black appliances include:

- 30" four-burner gas cooktop
- 30" built-in self-cleaning oven
- Built-in microwave oven/hood over cooktop
- Deluxe multi-cycle dishwasher

½ h.p. garbage disposal

Durable, no-wax vinyl flooring

Private Master Suites

Shower features cultured marble surrounds and clear glass shower enclosure with chrome finish, per residence

Maple recessed panel cabinetry in rich caramel finish and designer-selected cultured marble vanity countertop with backsplash

Top-set dual china sinks with faucets in an elegant polished chrome finish

Low maintenance vinyl flooring

Large walk-in closets

Secondary Bathrooms

Bathtub with cultured marble surround

Maple recessed panel cabinetry in rich caramel finish with cultured marble vanity top, top-set china sink, and polished chrome faucet

Low maintenance vinyl flooring

Powder room offers pedestal sink with polished chrome faucet, oval beveled-edge mirror, per residence



Energy-Efficient and Technology Features

Homes meet ENERGY STAR® and ComfortWise® program guidelines increasing energy efficiency of the home

Dual-pane vinyl windows and sliding doors with Low-E glass for improved energy savings

All exterior doors feature full weather stripping

Dual-zone, high-efficiency forced-air gas furnace with electronic ignition and energy-efficient electronic set-back thermostat

Air conditioning

Energy-saving 50-gallon gas water heater with recirculation pump to all fixtures

Smoke detectors wired throughout the home for safety

Gas and electric dryer hook-ups

Pre-wire for ceiling fans in family room and master bedroom

Structured wiring throughout home for high-speed networking including Category 5 cable with universal outlets in media, all bedrooms, and bonus room, per residence

Custom Choices™ Options Program

Certain homes at Rosewood Towns may have been beautifully pre-selected by our Design Studio Team with options and upgrades. Contact the Community Sales and Design Studio Team about available optional features.

Decorative tile, granite tile, marble tile, granite slab, and marble slab for countertops and surrounds

Choice of wood, finishes, and cabinet door styles

Glass upper cabinets in kitchen in select pre-determined locations, per residence

GE Profile®, GE Monogram®, Wolf®, and Sub-Zero® stainless steel kitchen appliances

Additional kitchen sink options as shown in Design Studio

Plumbing fixture finish in kitchen and baths

Instant hot water dispenser or combo instant hot and water filter in kitchen sink

Solid core, raised two-panel interior doors

Choice of brushed nickel or oil-rubbed bronze finish on interior door hardware

Designer-selected interior paint options

Carpet, pad, tile, and hardwood flooring upgrades

All stain-grade handrail, balusters and newels to complement cabinets

Stain-grade handrail and newel posts to complement cabinets with wrought iron balusters

Built-in media cabinet, per residence

Crown molding

Jetted tub in master bath

Heavy-duty shower enclosure in master bath

Clear glass tub enclosure in secondary baths

Mirrored closet doors in secondary bedrooms

Additional recessed lighting locations, per residence

Light fixture selections

Pre-wire for flat panel television

Additional data wiring, multicom ports and optional phone jacks

Pre-wire for security system

Full security system

Paint and texture garage interior

